



sature

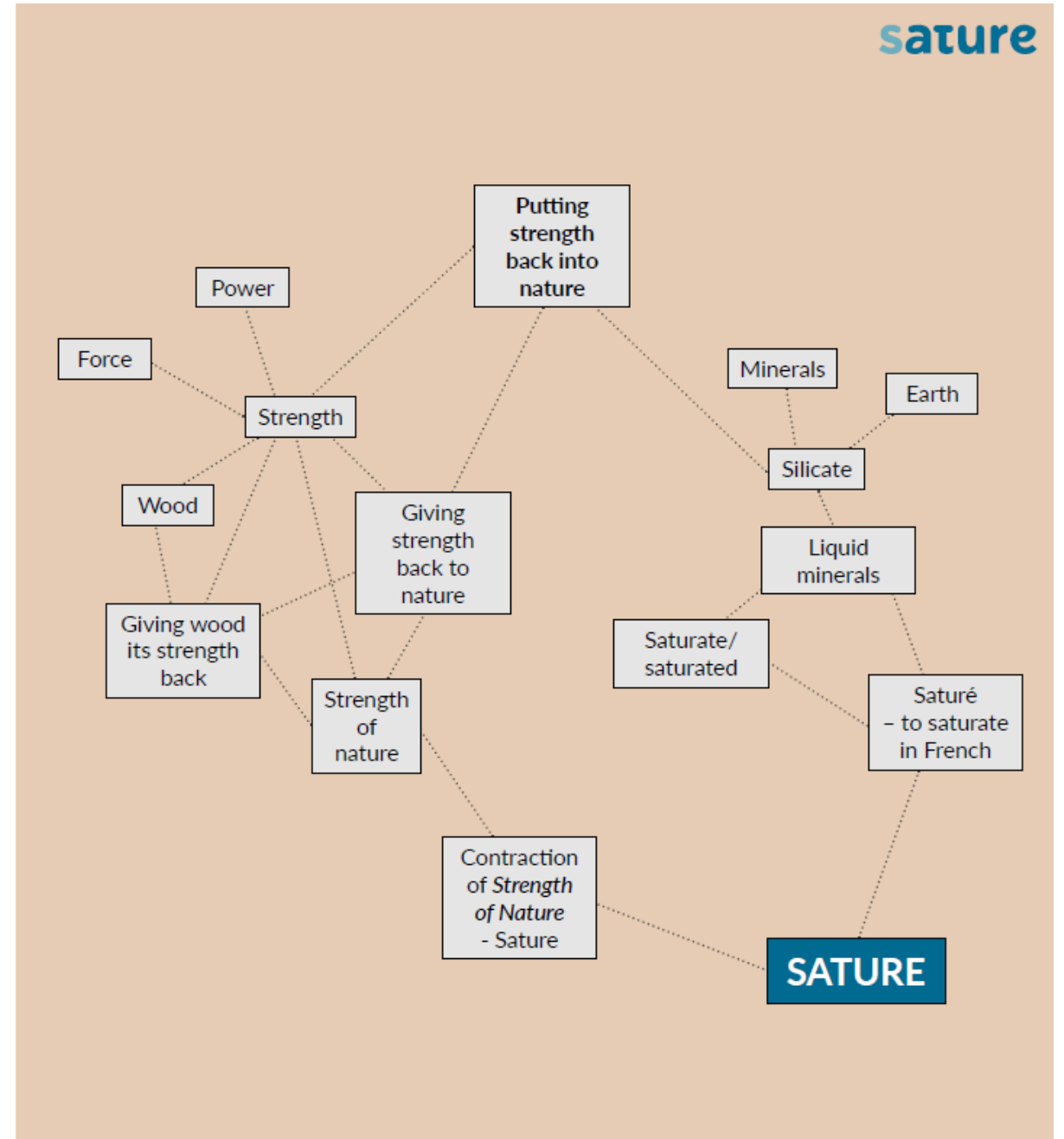
strength of nature

Sature bathing pier Mommarm Marina
Photo: Frøslev Træ A/S, Dorrit Andersen
August 2021

SATURE

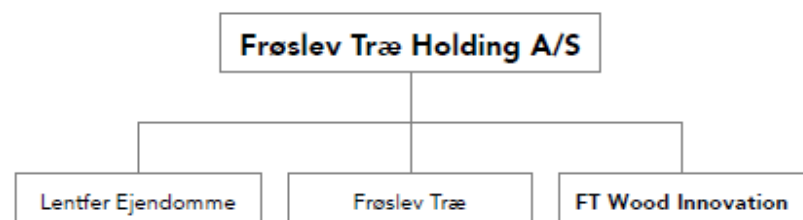
Sature is the brand name and identity of our “strength of nature” modification and wood treatment products.

We have created an environmentally friendly and nontoxic silicate modification process that allows you to strengthen the wood and make it more durable
– in other words make it stronger and last longer.



COMPANY STRUCTURES

FRØSLEV

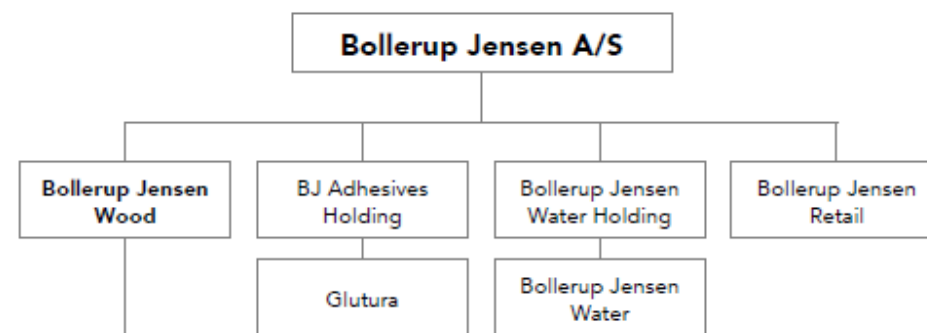


sature

Sature A/S

BOLLERUP JENSEN

GROUP > WORKING FOR A CLEANER FUTURE

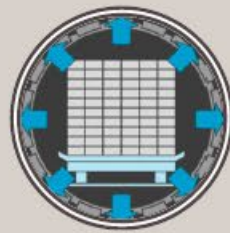


SATURE MODIFICATION PROCESS



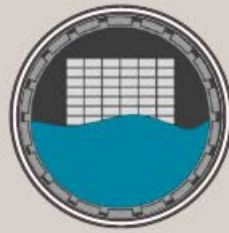
STEP 1

The wood is placed in a special steel autoclave



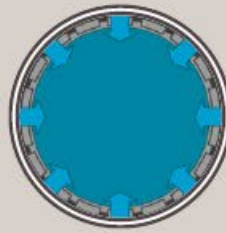
STEP 2

All air is evacuated



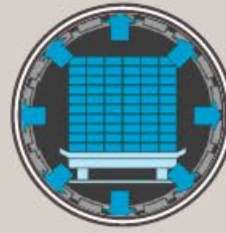
STEP 3

The autoclave is flooded with the modified silicate solution and hydraulic pressure applied



STEP 4

The pressure distributes the silicate in the wood



STEP 5

Excess liquid is pumped back into the storage tank and a final vacuum is applied

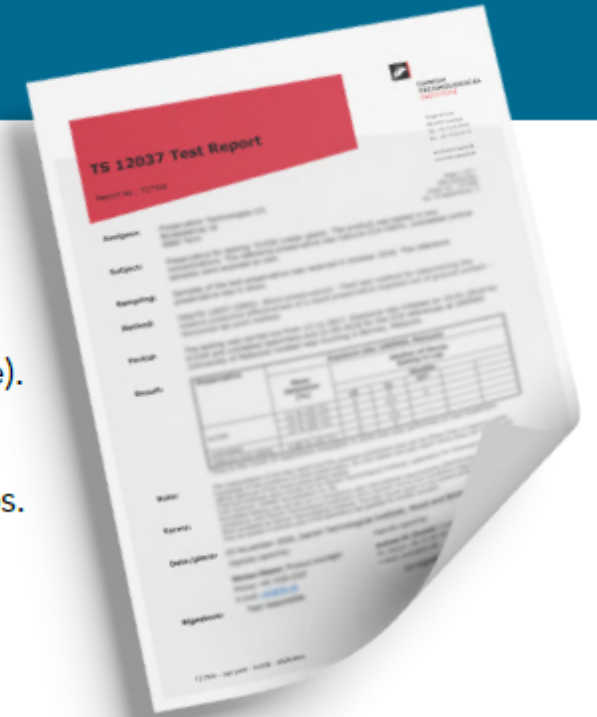


STEP 6

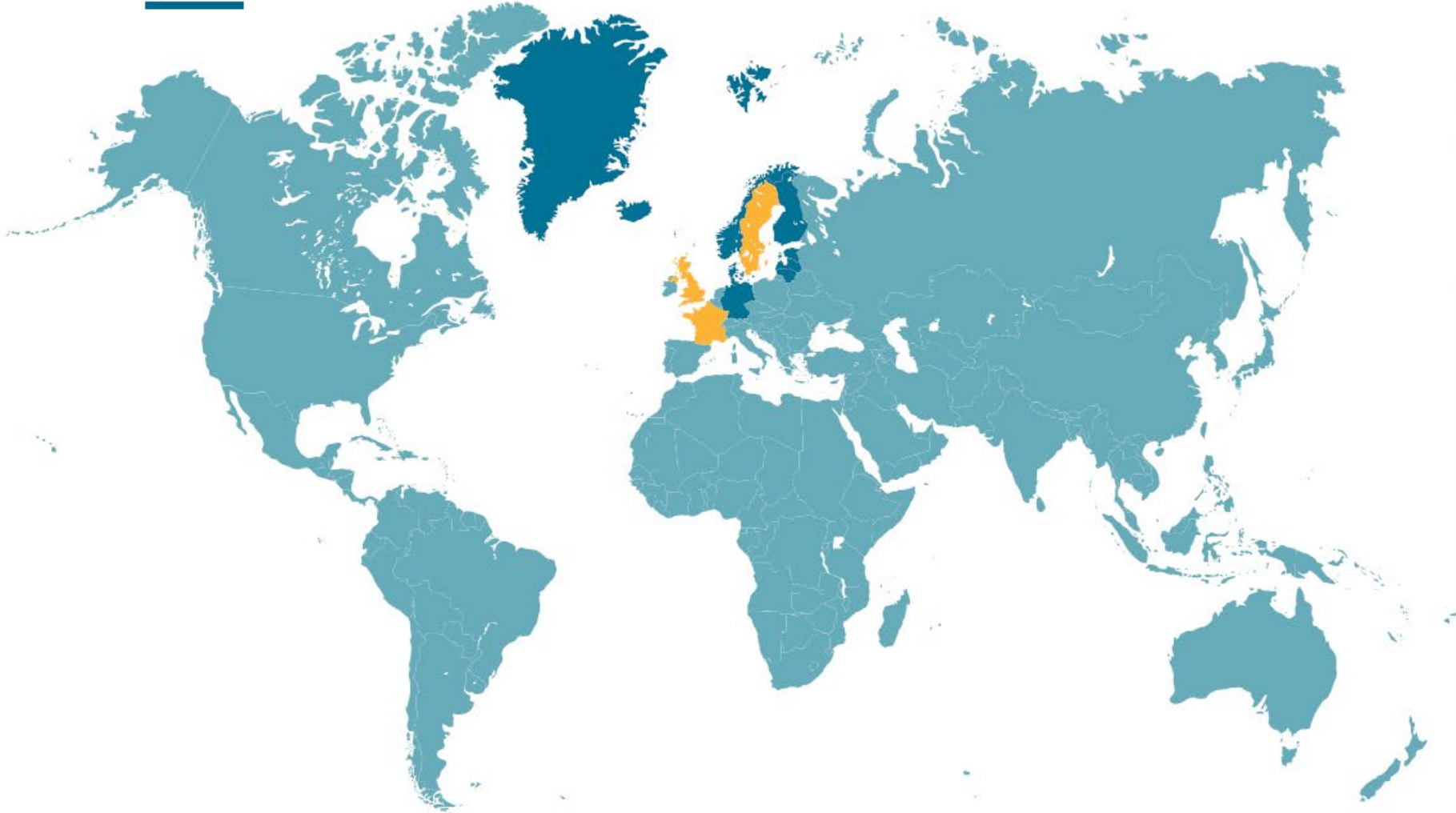
Drip-free and surface dry Sature is ready for post treatment processing

DOCUMENTS AVAILABLE UPON SIGNING NDA

- TS12037 Lap-joint test report from Malaysia (accredited testing, Danish Technological Institute).
- TS15083 Laboratory decay efficacy certificates (accredited testing, Danish Technological Institute).
- BS3900 Laboratory mould efficacy report (accredited testing, Danish Technological Institute).
- Misc. Progress reports from testing in Austria, USA, and France in decking and cladding scenarios.
- Misc. Trials with surface coating to reduce greying of tropical hardwoods, modified wood etc.
- PT Doc A Determination of Si content in treating solution
- PT Doc B Determination of Si content in treated wood
- PT Doc C Determination of moisture content in treated wood on site
- PT Doc D Treatment process details



OVERVIEW – FOCUS AND DISTRIBUTION



- Countries with contract
- Upcoming

YEAR ONE

2.574 M³

M³ wood produced in the first 12 months – corresponds to 643.500 meters 26x118 mm or 80.438 m²



sature

strength of nature